

PortBox2

Full RS-232 and RS-485 serial port to Ethernet

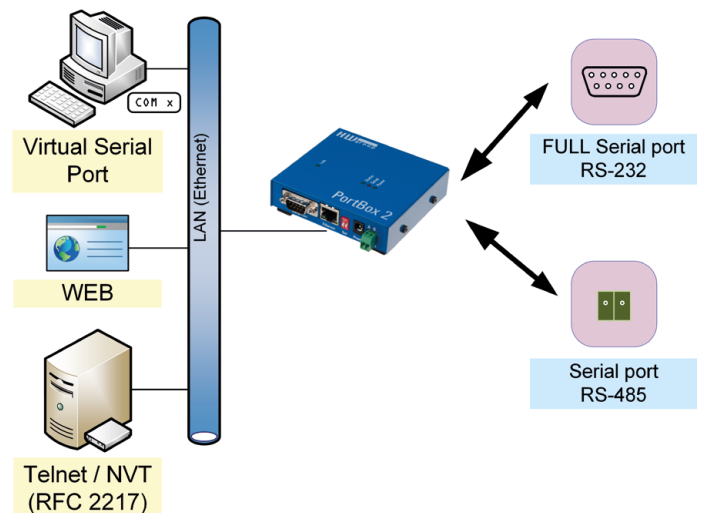
PortBox version 2 connects a RS-232 serial port and a RS-485 serial line to the Ethernet. The serial port can be connected over a LAN to Windows as a VSP (Virtual Serial Port) – for example COM17.

PortBox2 features a full RS-232 serial port (9 pins), which is fully supported by the HW VSP application.

PortBox2 can be used to connect any product with a serial port to LAN (such as RFID readers, bar code readers, PLC, printers, and so on...).

The Box-2-Box mode can “tunnel” the serial port over the LAN between two devices. All 9 pins of the serial port are supported.

PortBox2 can also transfer the 9th bit (extended parity or “9-bit” transfer mode).



Applications

- Remote serial port for MS Windows servers (HW VSP as a NT service)
- Connect any RS-232 device to a LAN
- Full serial port for the best compatibility
- Remotely control your PLC, security system, console system, etc...

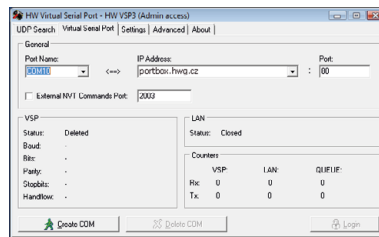
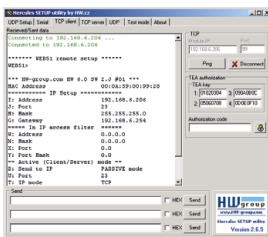
- ✓ Full RS-232 serial port
- ✓ Support for 9-bit protocols
- ✓ Box-2-Box mode
- ✓ WEB interface
- ✓ Virtual Serial Port for Windows
- ✓ Up to 100 serial ports on a single PC

Features

- Full RS-232 serial port (9 wires)
- Web-based configuration
- Supports 9-bit communication (virtual parity)
- Free virtual serial port for Windows (redirects e.g. COM17 at the PC over the network)
- HW VSP multiport supports the full serial port and up to 100 remote serial ports
- HW VSP can be used as a "NT service" in Windows. Ideal for server applications
- HWg-SDK for programmers (contains examples of using the product in Borland C++ Builder, MS Visual C, VB, Delphi, C#, PHP, JAVA)
- Box-2-Box mode:
Extend a full serial over the network with two PortBox2 units
- Supports RFC2217 – remote control of the serial port

PortBox2

Ethernet	100 Mbit/s
IP protocols	ARP, UDP/IP, TCP/IP (HTTP, Telnet + RFC2217)
RS-232	Cannon DB9M (Rx/D, Tx/D, CTS, RTS, DSR, DTR, RI, CD, GND)
RS-485	Terminals
Power	8-30V / 0.25 A
Dimensions	105 x 105 x 25 [mm]
Operating conditions	-10°C to +75°C +14°C to +167°F



Accessories & related products



I/O Controller2



IP WatchDog



IP Relay



DIN Rail box set

PortBox2 SET	Product quick start set – RS-232/485 to the Ethernet. Contains a CD and a power adapter.
DIN Rail box set	DIN rail mounting bracket.
I/O Controller2 SET	Product quick start set – 8 digital inputs, 8 digital outputs + RS-232/485 to the Ethernet. Contains a CD, a power adapter and a test board
IP WatchDog HWg-WR02a SET	Quick start set of an industrial watchdog (supports RS-232) Contains a power adapter and a CD.
IP Relay HWg-ER02b SET	Quick start set – 2x relay (230V/16A) + RS-232/485 to the Ethernet, CD and power adapter.