



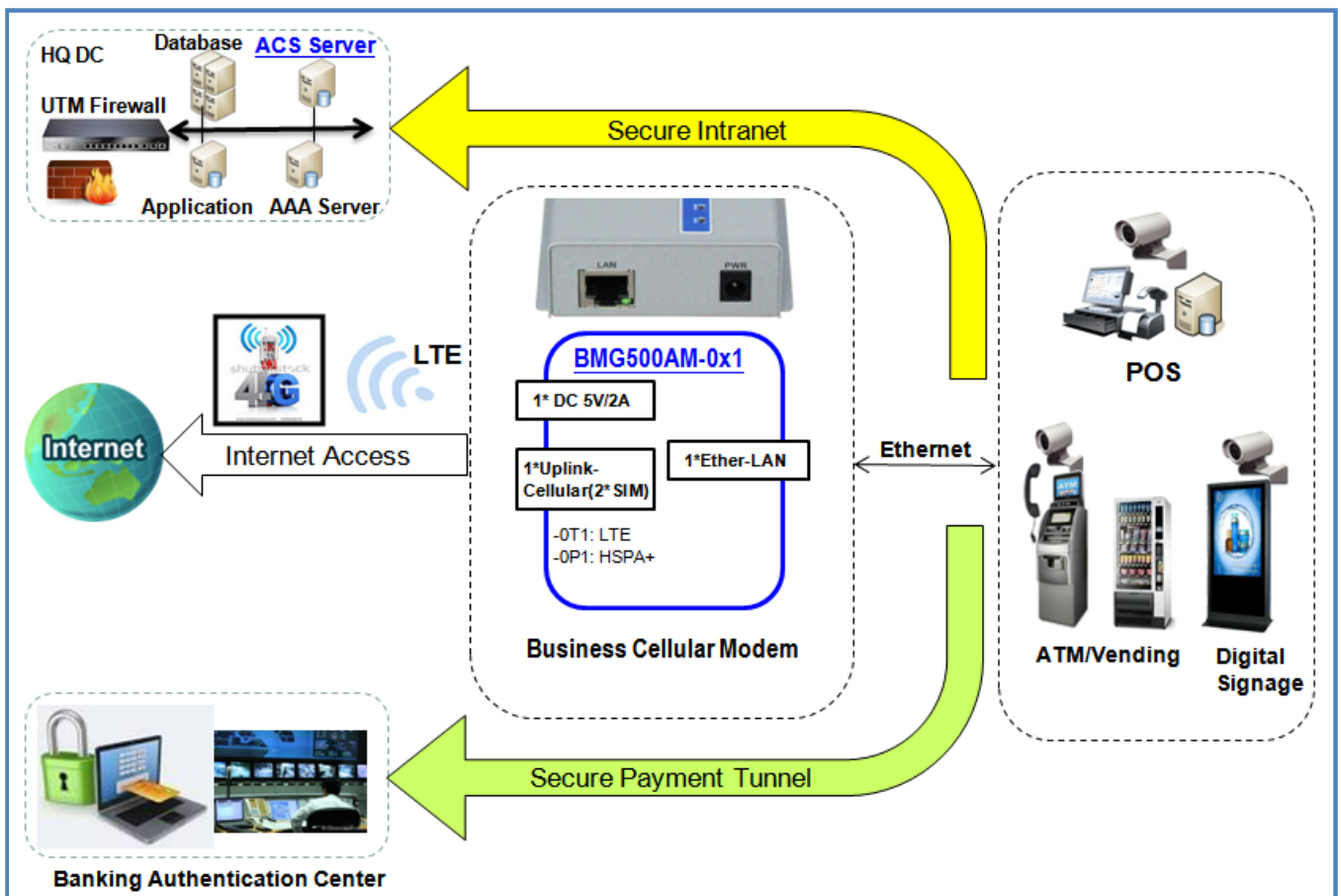
Business Access Series

BMG500AM-0T1 BMG500AM-0P1 Business Cellular Modem

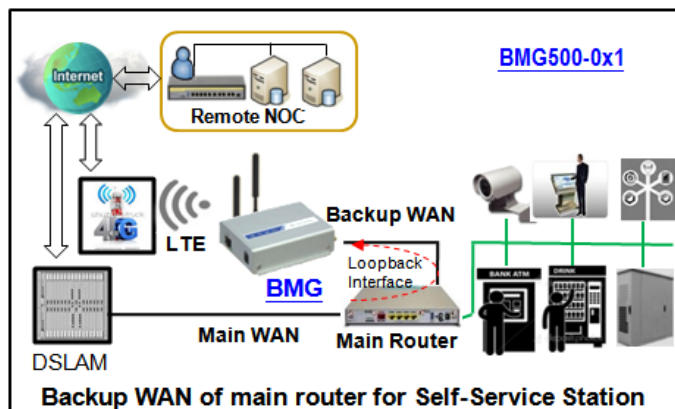
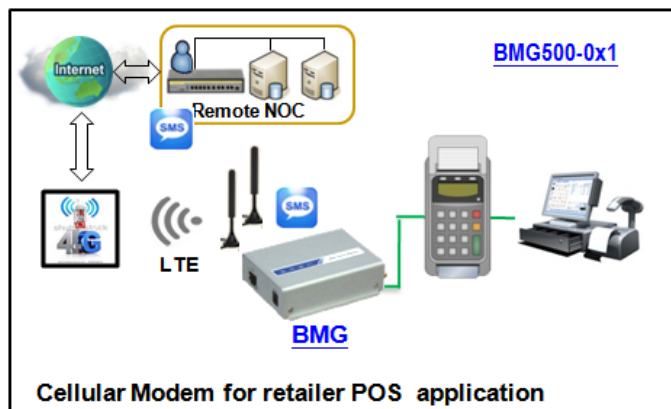
Feature Sets:

- Business Cellular Modem for Retail POS, and Self-Service Stations, like ATM and digital signage applications, or functioned as secondary / backup WAN for an existing main router.
- Equip with a dual-SIM LTE or HSPA+, provide cellular WAN failover function for highly reliable requirement, without geographic limit.
- 1* RJ45 fast Ethernet port for network device connection.
- Virtual loopback interface (IP Alias) helps administrator to configure the modem via Ethernet port.
- SMS-oriented event management enables administrator to remotely manage or monitor the modem over cellular network.
- Provide SMS ,SNMP Trap or Email alert for urgent events notification.

Connection Diagram:



Applications:



Specifications¹:

Device Interfaces

Uplink: -OT1: 1*embedded LTE (dual SIM);
-OP1: 1*embedded HSPA+ (dual SIM)
Ethernet Port: 1*RJ45 FE
Cellular Band²: LTE: 800/900/1800/2100/2600 MHz,
UMTS: 850/900/1900/2100 MHz,
GPRS/EDGE: 850/900/1800/1900 MHz
Antenna: 2*3dBi detachable ant. (3G/4G)
Power Source: DC 5V / 2A

Cellular Functions

Connectivity: SIM-SIM Failover / Failback, Reliability 24/7
APN Mgmt.: Auto-Detection, User Defined Priority,
Manual
Network Scan: Operator/Service Type/Band Selection
SMS: Send, Receive, Forward, Event Notify,
Device Event Manage
USSD: Manual/USSD Profile

Management

Configuration: Web UI, Telnet CLI, SSH
Network: SNMPv3
Event & Handler: SMS, Syslog, SNMP Trap, Email Alert,
Reboot

Systems

System: Status & Statistics, Tools, Scheduling,
FW Upgrade, Backup & Restore Settings,
Watch Dog

Dimension

Device (LxWxH): 93x90x27mm

Environment

Operation Temp.: 0 °C ~ 50 °C
Storage Temp.: -40 °C ~ 85 °C
Humidity: 10% ~ 95% (non-condensing)

1. Specifications are subject to change without advanced notice.
2. Supported frequency band is dependent upon regional hardware version.

Advance Multimedia Internet Technology Inc.

TEL: +886 (0)6 505 8026 FAX: +886 (0)6 505 8068

Web: <http://www.amit.com.tw> Email: sales@amit.com.tw

No. 28, Lane 31, Huandong Rd., Sec. 1, Tainan Science Park, Sinshih District, Tainan City 741, Taiwan

BMG500AM-0x1 V1.6b