

XProtect Basis and XProtect Basis+

offer you digital video solutions for networked surveillance with essential or expanded features.

XProtect Basis/Basis+ are just right for a small office or home that has a small to medium sized security installation. These solutions are attractively priced with functionality to provide essential or expanded features best suited to your needs, for the most value in your surveillance investment.

XProtect is a digital surveillance system with advanced management, flexible scheduling, and fast searching capability. Controlling up to 16 or 25 cameras per server, XProtect Basis and XProtect Basis+ interface with standard IP video and computer hardware equipment – efficient and easy to install.

Three system components – all in one solution:

THE ADMINISTRATOR

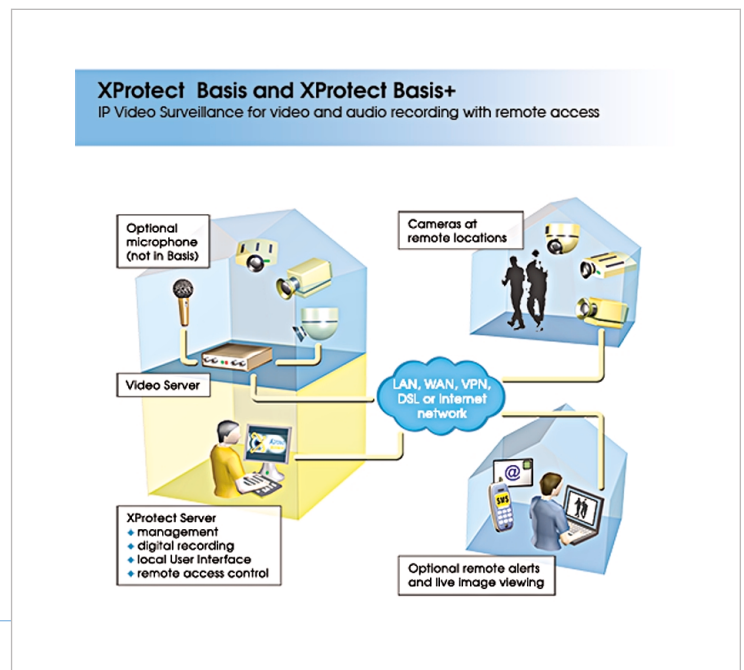
In the Administrator module of XProtect Basis/Basis+, you set up all your network cameras, video servers and users of the system. In the friendly interface you define how many camera views you want to see and their scheduling, archiving preferences, e-mail alerting, and user rights.

THE MONITOR

The Monitor in XProtect Basis and XProtect Basis+ lets you watch all live camera streams simultaneously from a central location for up to 16 or 25 cameras per server. Recordings can be searched and played back with indication of detected motion.

THE REMOTE ACCESS SERVER

XProtect Basis and XProtect Basis+ have a built-in web server for access to your surveillance system from remote locations using Microsoft Internet Explorer. You have full remote access to recorded images and live video in a single view (with Basis) or a quad view (in Basis+).



"After more than 3 years of secure operations, the Milestone software still runs totally reliably, and it is very user-friendly. It is simply a good product."

Alfred Hansen, Director, The Chocolate Specialist

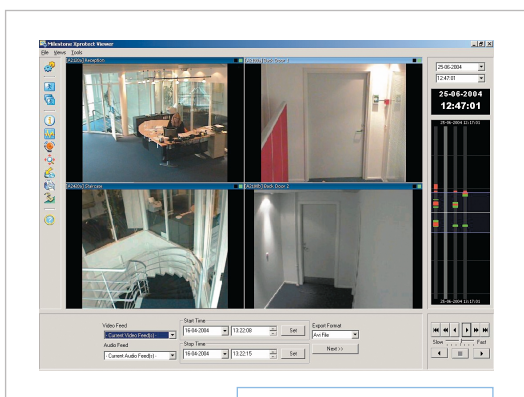


XProtect Basis and Basis+

Milestone XProtect software is designed with open architecture, which lets you choose from the leading manufacturers' hardware.

VIDEO & AUDIO RECORDING

- ◆ Simultaneous video recording, viewing and playback of images.
- ◆ XProtect Basis handles up to 16 cameras, while XProtect Basis+ can be purchased for 4, 9, 16, or 25 cameras.
- ◆ XProtect Basis+ also offers simultaneous audio recording (one channel) and instant playback in real time.
- ◆ Recording/viewing speed: 30+ frames per second per camera, only limited by hardware.
- ◆ Recording quality: JPEG 1280x1024 or better. All resolutions depend on IP cameras and video servers.
- ◆ Recording technology: high speed database holding JPEG images.
- ◆ Recording capacity for Basis: 600,000 images per camera; for Basis+: 600,000 images per camera per day.
- ◆ Instant search on recordings based on date/time and activity/alarm (Video Motion Detection).
- ◆ Results can be generated as a JPEG image or as an AVI film.



Recordings Viewer



Live Monitor

REMOTE ACCESS

- ◆ The built-in web server provides remote access to both live viewing and recordings.
- ◆ From remote locations via the web interface you can view live images from one camera in XProtect Basis and four cameras simultaneously in XProtect Basis+.
- ◆ Playback and browse recordings from one camera via the web interface.

MOTION DETECTION

- ◆ Fully adjustable, built-in, real time Video Motion Detection.
- ◆ VMD supports excluded zones.
- ◆ In XProtect Basis+ cameras can be set to speed up the number of frames when motion is detected or an event occurs.
- ◆ Active alerting through email.

PTZ CONTROL

- ◆ XProtect Basis offers manual Pan/Tilt/Zoom control.
- ◆ XProtect Basis+ also offers the ability to preset PTZ positions, up to 25 per camera.

INTEGRATION

- ◆ XProtect Basis+ offers integration with XProtect Transact for monitoring Point-Of-Sale or ATM transaction data together with video.
- ◆ XProtect Basis+ supports camera control via external sensors.

MINIMUM SYSTEM REQUIREMENTS:

For up to 100 fps* in total:

- OS: Windows 2000, XP Pro, 2003
- CPU: Pentium 4, 2.4GHz (HT cannot be utilized)
- RAM: 1 Gbyte
- Network: Ethernet 100Mbit
- Video card: AGP (min. 1024x768)
- Video colors: True 24 bit
- HDD: E-IDE (7200 rpm recommended)

*Resolution 352x288 (12-18 KB image size)

For up to 150 fps* in total:

- OS: Windows 2000, XP Pro, 2003
- CPU: Pentium 4, 3.6GHz (HT cannot be utilized)
- RAM: 1 Gbyte
- Network: Ethernet 100 Mbit
- Video card: AGP (min. 1024x768)
- Video colors: True 24 bit
- HDD: E-IDE (7200 rpm recommended)

*Resolution 352x288 (12-18 KB image size)

